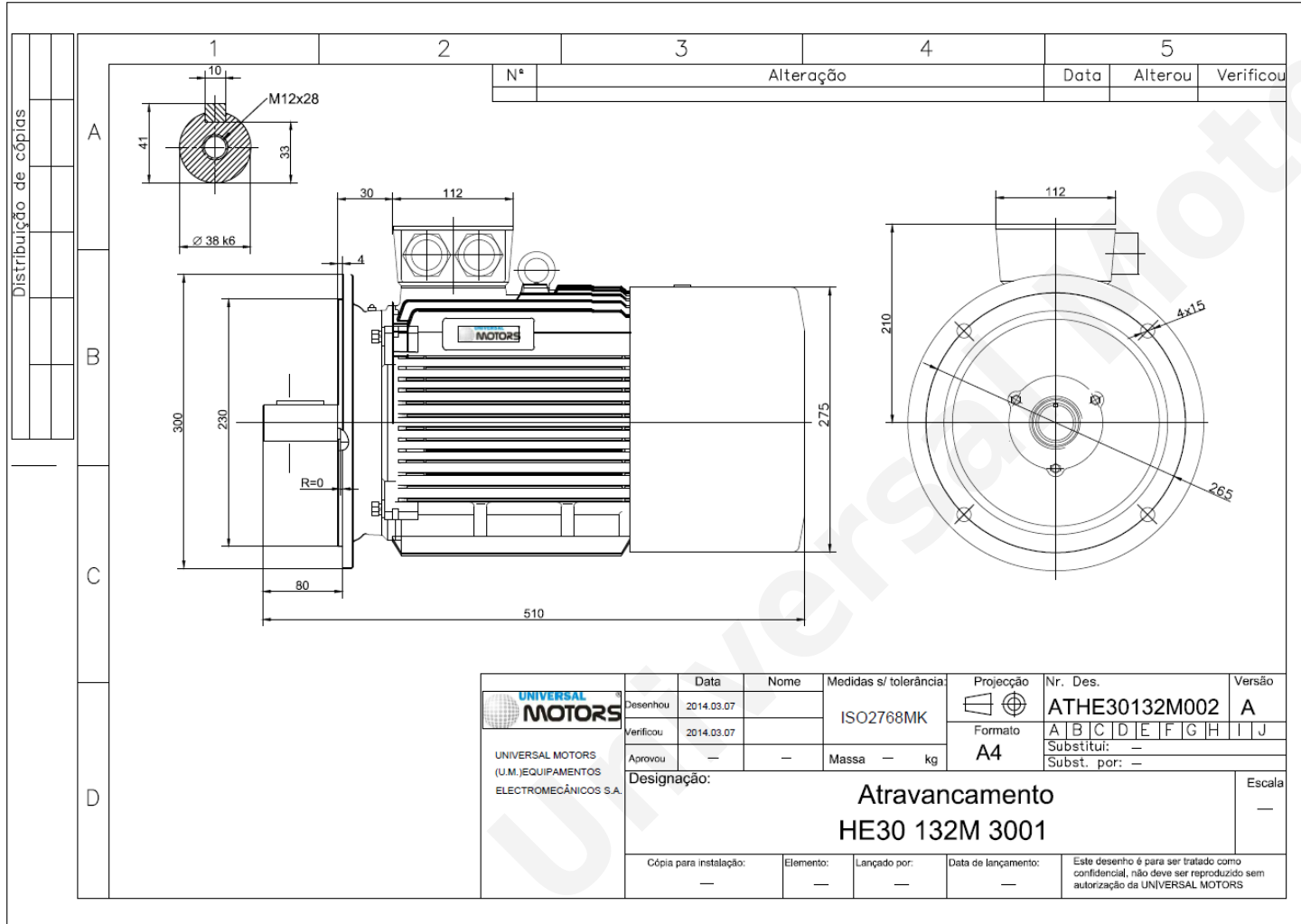




# TECHNICAL DATA

Three Phase Electric Motors - Cast Iron Frame  
 HE30 132 M2 6 IE2  
 5.5 kW / 7.5 Cv  
 965 RPM



Motor type: **HE30 132 M2 6 IE2**  
 Output: **5.5 kW / 7.5 Cv**  
 Speed (min<sup>-1</sup>): **965 RPM**  
 Frequency: **50 Hz**  
 Voltage: **400 V**  
 Current: **12.3 A**  
 Power factor (Cos Ø): **0.75**  
 Poles: **6**  
 Insulation class: **F**  
 Temperature rise Class: **B**  
 Efficiency 50%: **85.1 %**  
 Efficiency 75%: **86.5 %**  
 Efficiency 100%: **86.0 %**  
 Torque: **54 N.m**  
 Tstarting/Tnominal: **2.0**  
 Istarting/Inominal: **7.1**  
 Tmaximum/Tnominal: **2.1**  
 Noise: **58 Db(A)**  
 Weight: **79 Kg**  
 Bearing DE: **6308 2Z C3**  
 Bearing NDE: **6308 2Z C3**

Regime - S1

Altitude - 1000m

Environment Temperature - 40°C

## CONTACTS:

UNIVERSAL MOTORS Tel: +351 252 299 080  
 Rua de São Brás,745 Fax: +351 252 299 089  
 4480-782 VILA DO CONDE Mail: [geral@universalmotors.pt](mailto:geral@universalmotors.pt)

\* References applied only in the UK